



AVX

Model: EKP AVX
 Model: SK AVX
 Model: SKM AVX
 Model: SKM-S AVX

Quick Guide
 Kurzanleitung
 Guide rapide
 Guida rapida
 Guía de inicio rápido
 Guia rápido
 Beknopte handleiding
 Krótka instrukcja obsługi
 Snabbguide

Kort vejledning
 Pikaohje
 Γρήγορος οδηγός
 Kısa Kılavuz
 Краткая инструкция
 快速指南
 快速使用指南
 クイックガイド
 퀵 가이드

SENNHEISER



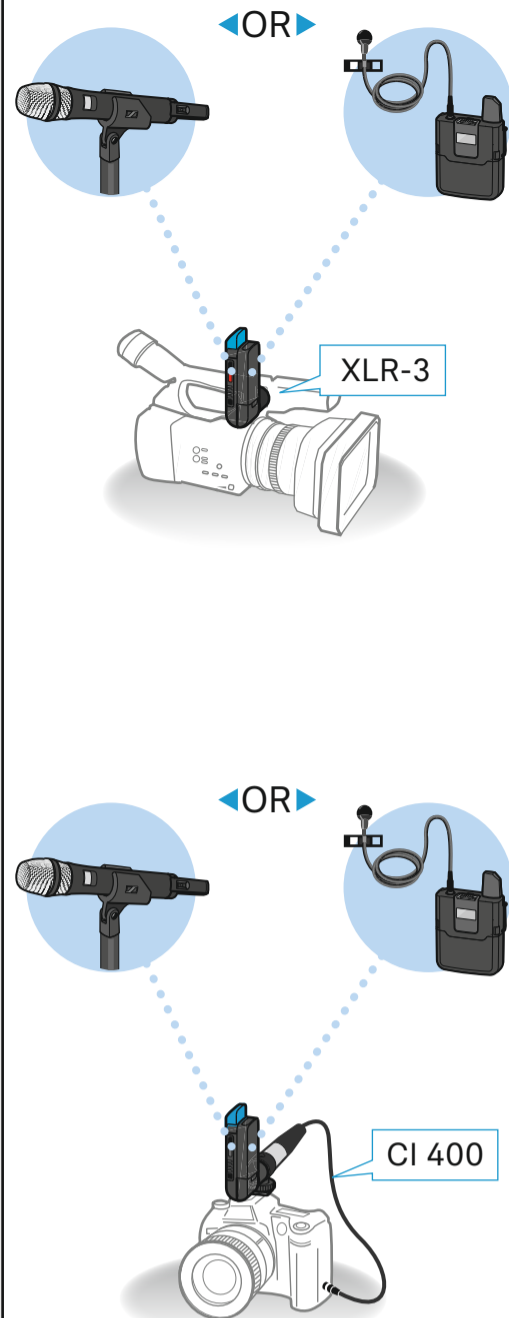
www.sennheiser.com/download

Sennheiser electronic SE & Co. KG

Am Labor 1, 30900 Wedemark, Germany
www.sennheiser.com

Printed in Germany, Publ. 06/24, 583901/A06

Video digital wireless

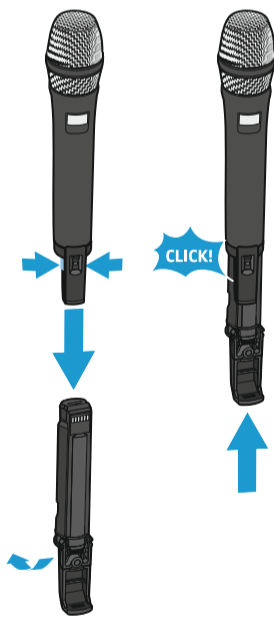


In the box

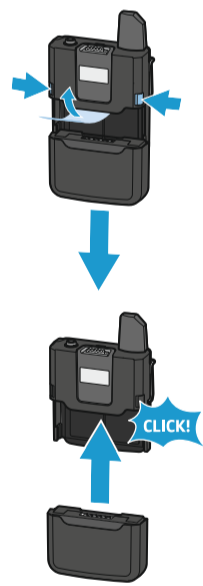


Battery

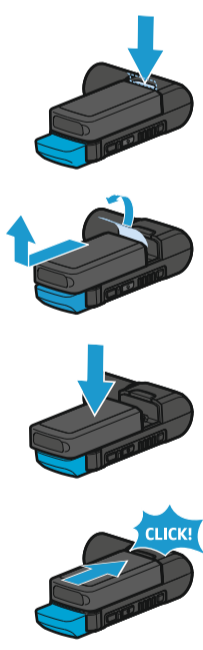
SKM AVX
BA 10



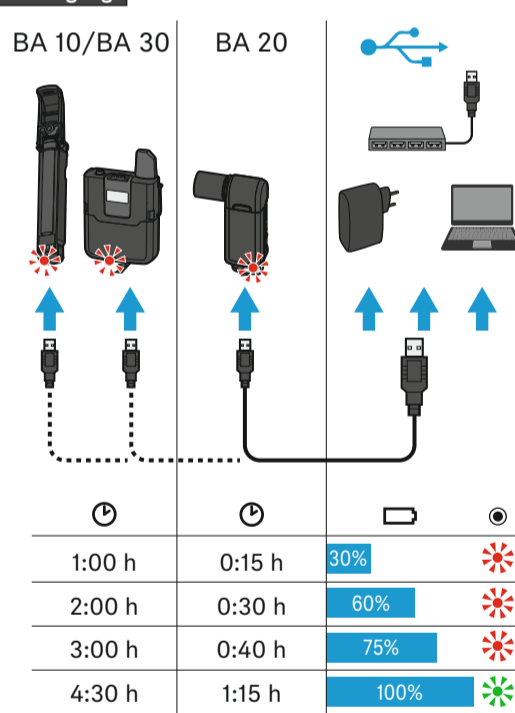
SK AVX
BA 30



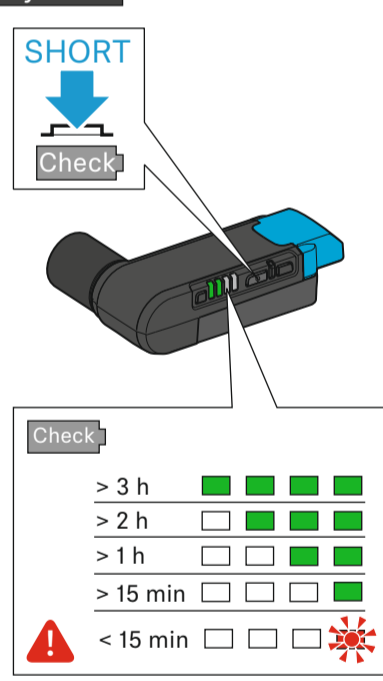
EKP AVX
BA 20



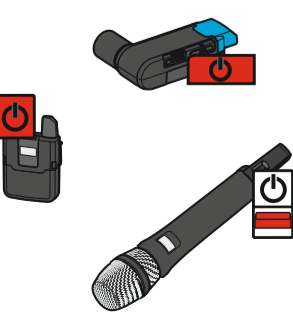
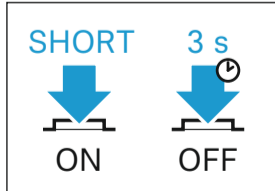
Charging



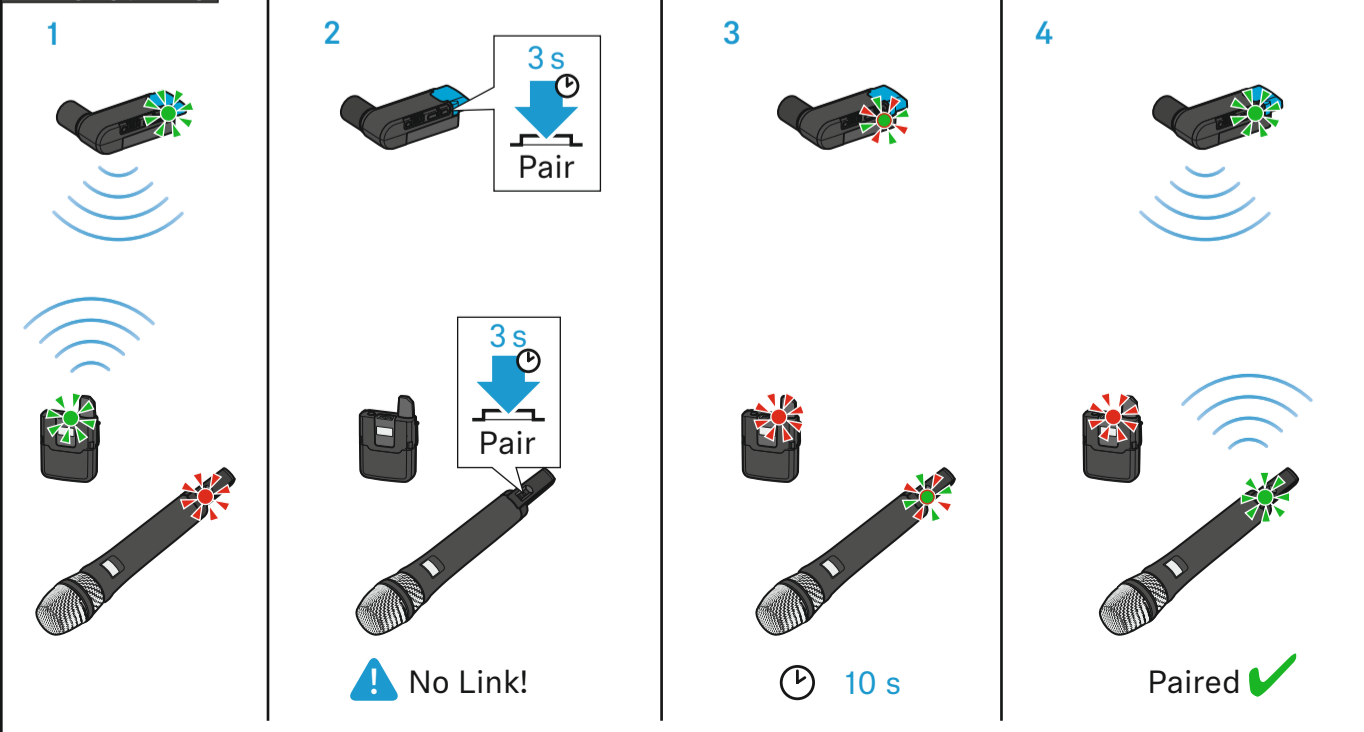
Battery check



On/Off



Changing pairing



Setup

Video camera | XLR-3

DSLR | 1

2

3

4

5

6 | CI 400

Belt

i STOP! max. 320° STOP!

Audio level

1

2

3

Auto ON/OFF

INPUT LEVEL

- ✗ Auto
- ✓ Manual

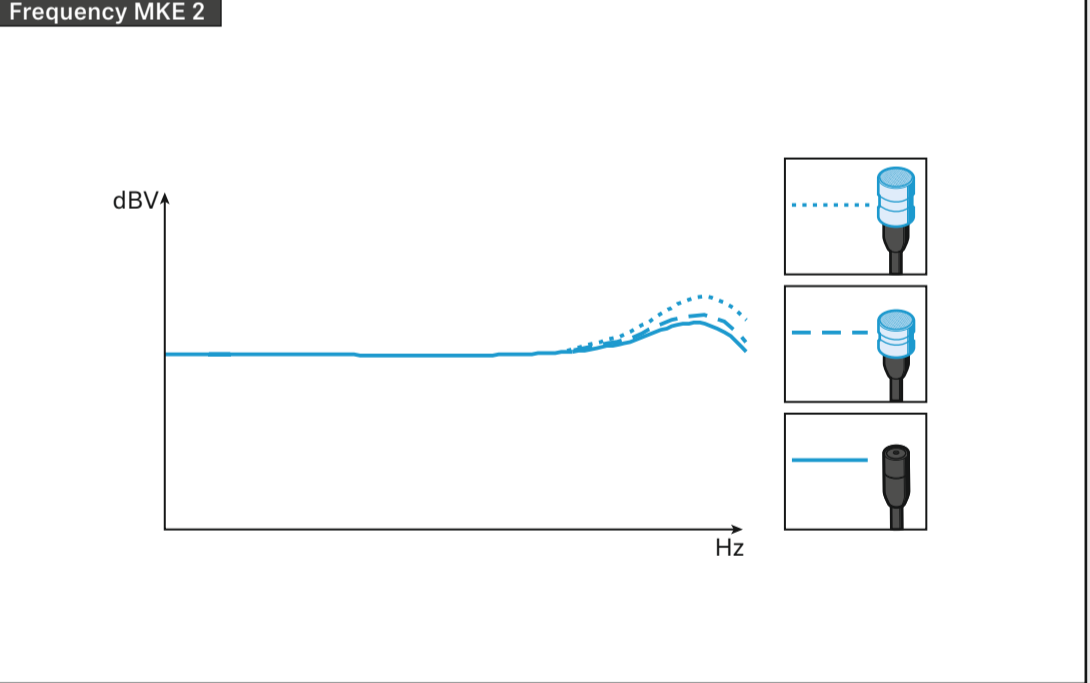
LEVEL

AF Out

Line | Mic | Mic P48

OFF | ON

MKE 2 + ME 2



MKE 2 | **ME 2**

25 cm (10")

MKE 2 | 1

2A

2B

MKE 2 | 1

2

3

4

- 20 dB ✓

- 30 dB ✓

Clip

MKE 2 | 1

2A

2B

MKE 2 | 1

2

3

4